

INDUCTOSCAN[®] - Statische II

Induction Heating Scanning System







Overview

MEDIUM DUTY INDUCTION SCANNER

The newly redesigned Inductoscan® Statiscan II Induction Heat Treating System is built from the ground up as a complete vertical scanning workstation. This system boasts two standard scanning spindles, high-strength architecture, rigid tower assembly, and many available options. Every Statiscan II is hand built in Madison Heights, Michigan, incorporating the latest induction heating technology.

SELF CONTAINED SYSTEM WITH ROOM TO WORK

The Statiscan II includes several spacious compartments that make adjustments, customizations, and regular maintenance easy, as the components are accessible and there is room to work. The power cabinet is large and can accommodate a wide variety of inverter power and frequency combinations.

REDESIGNED SCANNING TOWER

The Statiscan II scanning tower has been redesigned with an improved machine mounting configuration, upgraded ball screw, additional guide shaft, upgraded spindles, and better bearings. These improvements make the tower stronger, extend life expectancy, and provide a more reliable datum point that will maintain its position better over time.

USER-FRIENDLY HMI

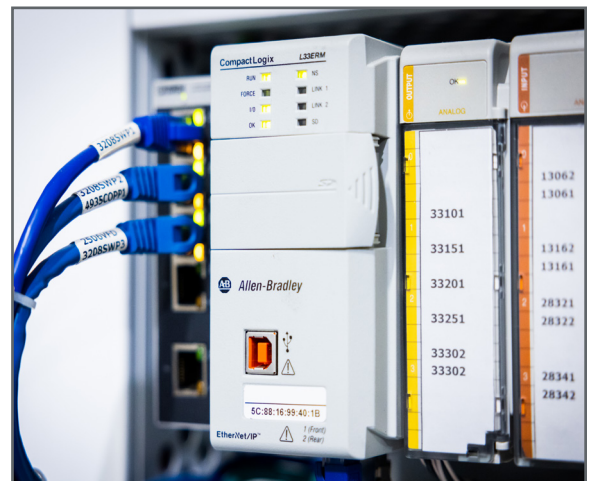
User-friendly PC/PLC based controls simplify set-up, changeover, diagnostics, and process monitoring. The programs are designed for effortless touchscreen navigation and are ideal for monitoring and logging the process of every part during the heating application.

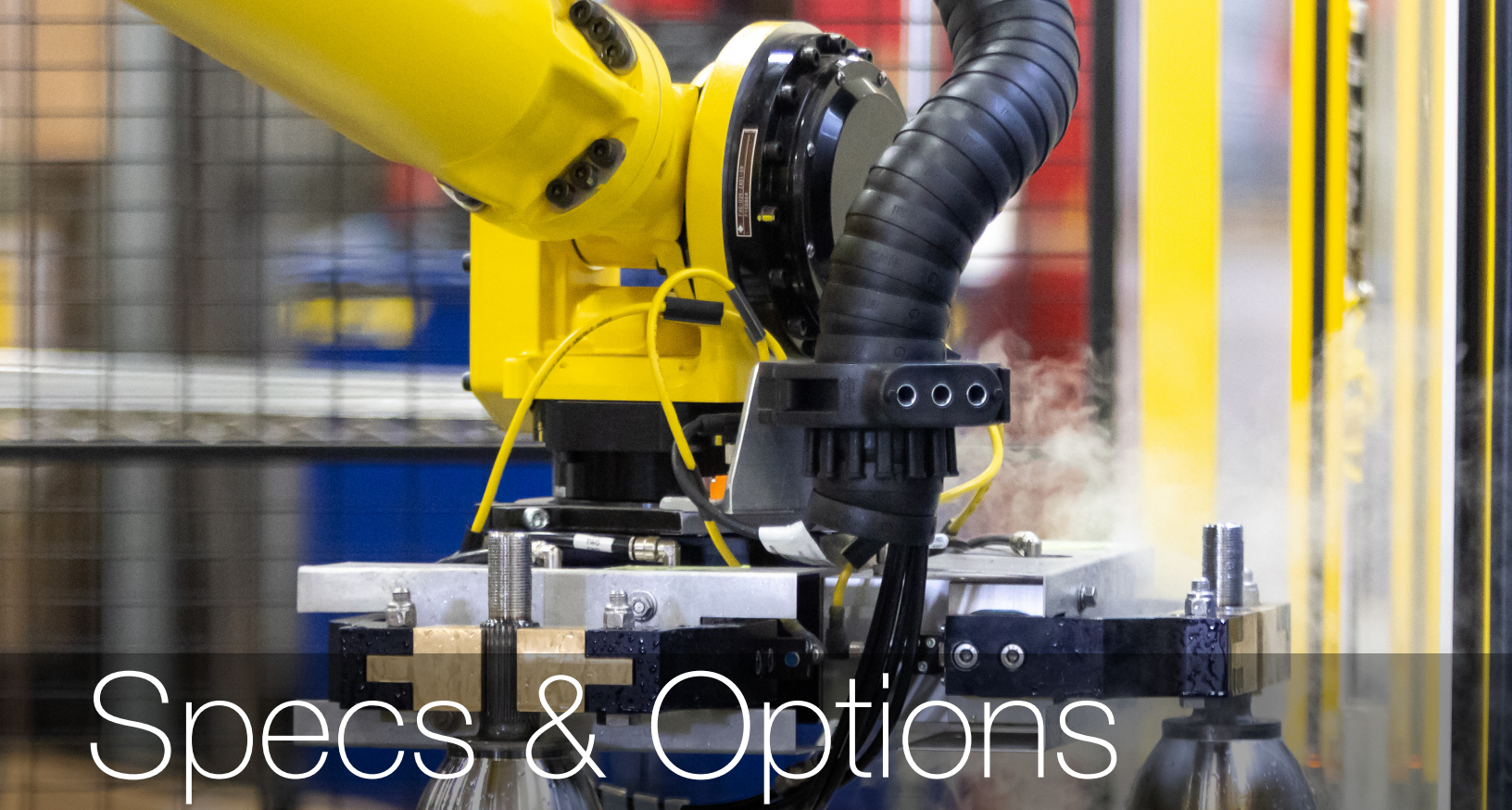
CQI-9 SIGNATURE MONITORING

Inductoheat's proprietary Signature monitoring package is a high-performance optional software solution that helps our customers achieve the highest quality induction process. The system captures real-time data to identify trends before product quality is affected. This data analysis allows you to focus on running production instead of spending time and money on destructive testing.

Features & Benefits

- Two spindles to process parts simultaneously
- Scan, lift/rotate, pick & place, robot, linear transfer
- Self-contained, compact design
- Different power ratings and frequency ranges
- Process monitoring options
- Reliable performance
- Simple utility connection for fast install and relocation
- Integrated mist collection hood
- Built-in inverter water cooling and quench recirculation
- Standard upper center adjustment (x-y) capability





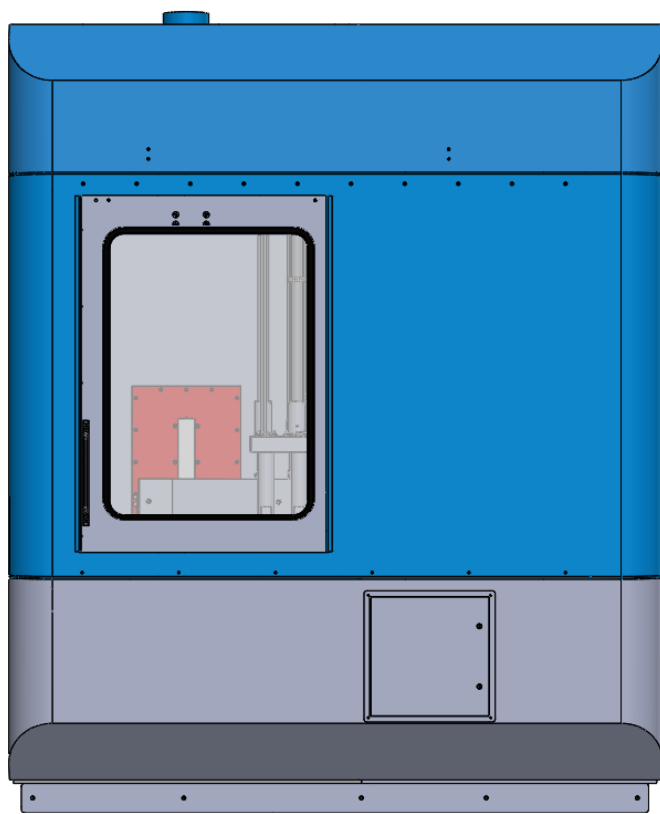
Specs & Options

Machine Info	
Standard Power Ratings	25 - 300 kW @ 10-200 kHz
Tower Span Length	26.5" (673mm)
Maximum Part Length	30" (762mm)
Scan Speed (Max)/sec	10"/sec
Workpiece Capacity (Max)/Spindle	25 lbs. per spindle (50 lbs, max total)
Spindle Center Spacing	8" (203mm) on center
Standard Controls	Windows PC / PLC & HMI
Cooling System	Closed-loop nonferrous reservoir, heat exchanger, and recirculating system with centrifugal pump
Line Voltage	@480V, 60Hz, 3 phase

Available Options	
Auto Door	Side access door
High-pressure coil booster pump	Insta-change coil adapter
Servo-driven actuators	Process data archiving
Signature process monitoring package	Pneumatic load assist vees
Pneumatic upper centers w/down pressure	Upper live centers for part rotation detection
Upper driven centers	Servo part rotation
Hollow spindles for ID part processing if needed	Mist collection system
LVDT - Linear transducer for precision part positioning	Auto-adjust upper centers
Quench filtration upgrade	Automatic lubrication system
Quench concentration sensors	Robot Interface upgrade
Active TIR control	6 axis 5kg robot

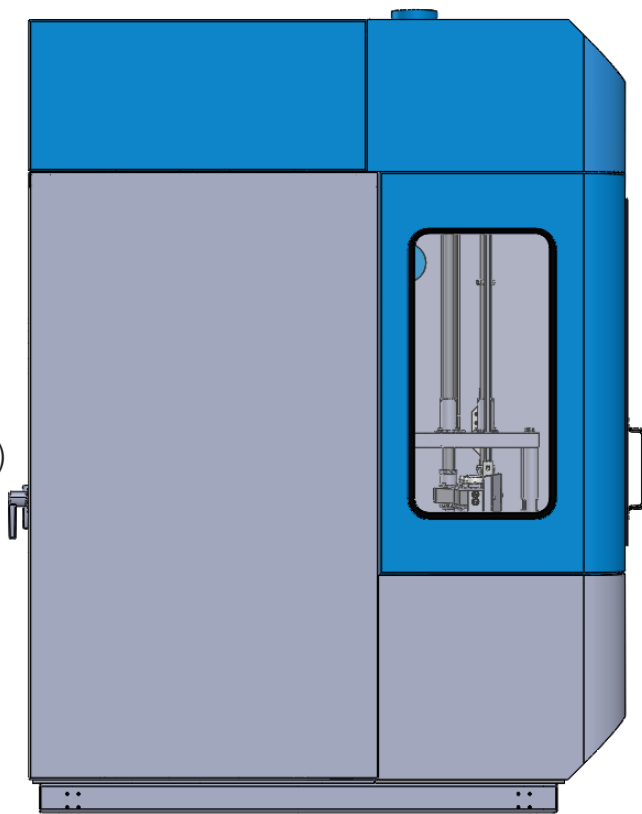


Dimensions



93.3"
(2369mm)

108.63"
(2759mm)



87"
(2210mm)

Induction is an **eco-friendly** process, as it does not generate carbon during heating. The electrification of the automobile and the manufacturing goal of a **zero-carbon target** process makes induction the perfect solution for heat treating, tempering, brazing, forging, and shrink fitting.

Inductoheat's experienced team of scientists, metallurgists, engineers, application experts, and aftermarket representatives stand ready to work with you.

Give us a call or send us a note.

Telephone: **248-585-9393**

Email: **sales@inductoheat.com**



Inductoheat Inc. • 32251 N. Avis Drive • Madison Heights, MI 48071
www.inductoheat.com