

## STATIPOWER® SP18

### Transistorized Induction Heating Power Supplies

#### Features/Benefits:

- Operates into a parallel tuned load circuit for use with remote or existing heat stations
- Multiple power/frequency combinations for application matched performance
- Input power factor is 0.95 under all operating conditions
- Output regulation of voltage, power or current. Jumper selected
- Interchangeable control board  
Factory calibrated to eliminate field adjustment and calibration
- Modular, single-layer design for easy access and maintenance
- Built-in annunciator panel for simplified status/fault diagnostics
- < 85 dB operating sound level for quiet operation

#### General Purpose Induction Heating Power Supplies

STATIPOWER® SP18 are water-cooled, solid state power supplies designed for case hardening, through hardening, annealing, mass heating and many other applications. Power supply ratings are from 150 to 600 kW with frequencies from 3 to 50 kHz in single or dual frequency models. See specifications on back.



SP18 600 kW / 30 kHz

#### Transistorized Circuitry For Improved Reliability

All STATIPOWER® SP18 systems incorporate "Restart" circuitry eliminating nuisance shutdowns caused by voltage transients, ground faults, shorted or arcing loads. Because load current is not used for commutation, equipment can be operated with the output shorted for easy trouble shooting. Solid state accuracy assures output power regulation of  $\pm 1\%$  with a line variance of up to  $\pm 10\%$ . Reliability is further enhanced by placement of 95% of all circuitry on one control board which is accessible without entering the high voltage section of the power supply.

#### Reliable Design For Safety And Long-Life Performance

STATIPOWER® SP18 units have a DC diode bridge, line choke and capacitor bank to minimize the effects of line noise and harmonic feedback. This also insures a constant input power factor of 0.95 regardless of loading for the best possible efficiency, resulting in lower electric demand charges. All power components with DC potential are electrically insulated from the water cooling circuits. This eliminates the possibility of electrolysis. Other system features include an input line disconnect with UVR, output isolation transformer, differential pressure switch and temperature switches on water supply and return manifolds.

# STATIPOWER® SP18

## Transistorized Induction Heating Power Supplies

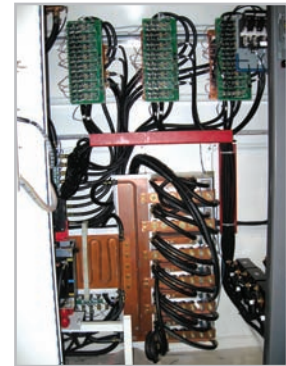
### SPECIFICATIONS:

ELECTRICAL OUTPUT				PHYSICAL DATA				UTILITY REQUIREMENTS	
kW Rating at Given Frequency				Cabinet Dimensions: in. (mm)			Ship Wt.	kVA	Cooling Water: g.p.m. (l.p.m.)
3kHz	10kHz	30kHz	50kHz	Depth	Height	Width	lbs. (kg)		
100	100	100	100	30 (760)	80 (2030)	42 (1065)	2000 (910)	124	25 (95)
150	150	150		30 (760)	80 (2030)	42 (1065)	2200 (1000)	186	25 (95)
200	200	200	200	30 (760)	80 (2030)	42 (1065)	2200 (1000)	248	30 (114)
300	300	300	300	36 (915)	90 (2285)	60 (1525)	2400 (1090)	372	30 (114)
			400	36 (915)	90 (2285)	90 (2285)	2900(1315)	496	50 (190)
450	450	450		36 (915)	90 (2285)	90 (2285)	2700 (1225)	560	50 (190)
600	600	600		36 (915)	90 (2285)	90 (2285)	3100 (1405)	744	75 (284)

\* Other sizes available upon request.  
\* Specifications subject to change without notice.



SP18 heat treats a wide variety of parts



Single layer interior design and specially routed water hoses and components



Digital meters are available as an option

### COMMON FEATURES:

<b>Energy Conversion Efficiency</b>	85% minimum
<b>Input Power Factor</b>	0.95
<b>Output Regulation</b>	Voltage, power or current
<b>Regulation Accuracy</b>	±1% with ±10% line variance
<b>Water Requirements</b>	95° F (max.) (35° C)
<b>Power Requirements</b>	460 V, 3 phase, 50/60 Hz
<b>Operator Controls</b>	Panel-mounted analog meters for voltage, frequency, current and output power. LED operation and diagnostic indicators. Ten turn potentiometer for control of output power or voltage
<b>Safety Features</b>	Door interlocked disconnect switch and fast-acting semiconductor-type fuses. External, inlet and outlet cooling water pressure gauges. Water pressure differential switch and manual reset temperature switches on each water circuit. Input line disconnect with UVR.
<b>Options</b>	Unicool water cooling system, 4-20mA power level control, RS-232/485 interface, digital meters, 0-10 volt meter signals, PLC interface. Timer Control. Inductor Ground.

\* Specifications are subject to change without notice.



ISO 9001:2000 Certified

©2007 Inductoheat, Inc. All Rights Reserved. LITHO IN U.S.A 1M 01/07 BULLETIN P-29 Rev 2