

FluxManager[®] Systems For OCTG Pipe Ends

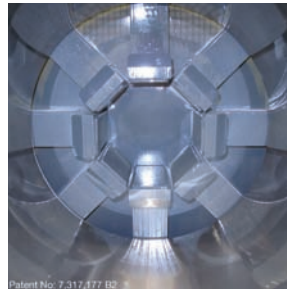
Flexible Tube & Pipe Heating Solution

FluxManager[®] systems utilize patented technology that yields superior temperature uniformity compared to conventional medium frequency designs.

FluxManager[®] systems can be used for a broad range of thermal applications including; preheat for welding, removal and cure of coatings and friction weld and swage stress relieving.

FluxManager Features/Benefits:

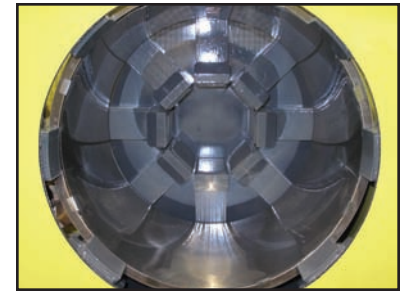
- FluxManager[®] systems provide deep and uniform temperature distribution, ID/OD, laterally, and longitudinally along extended lengths of pipe ends.
- Use less power and time compared to conventional medium frequency induction heaters.
- Zero change tooling handles a wide range of diameters, wall thickness and heated lengths.
- Self contained and easy to relocate within the plant as equipment and floor layouts are updated.
- Full power and heat time control.
- Meets or exceeds API[®] tube & pipe specifications.



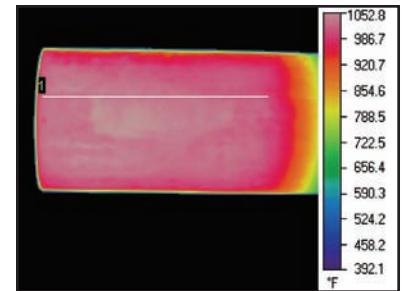
FluxManager® Systems For OCTG Pipe Ends

Specifications:

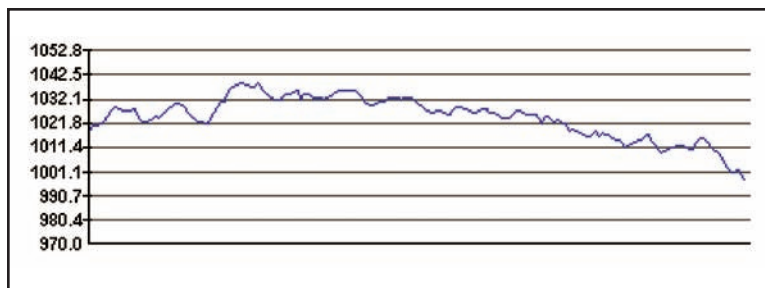
Standard Power Ratings (Other sizes available upon request.)	100 kVA, 165 kVA, 50/60 Hz, Single Phase		
Cooling System	Standard water-to-water recirculation system.		
Pipe Size (Other sizes available upon request.)	3 1/2" - 7 5/8" (90 - 195mm)	7 5/8" - 12 5/8" (195 - 320mm)	12 5/8" - 18 5/8" (320 - 475mm)
Complete Coil Assembly	#762	#1262	#1862
Shipping Weight	Transformer/Controls: 1200 lbs. (545kg) Coil Table: 600lbs. (270kg)		
Transformer/Controls Dimensions Width x Length x Height	42" (1070mm) x 60" (1525mm) x 72" (1830mm)		
Coil Table Dimensions (Adjustable Height) Width x Length x Height	24" (610mm) x 36" (915mm) x 24" (610mm)		
Plant Water Requirements	10 gpm @ 50psi @ 110°F max. 45 lpm @ 3 bar @ 43°C max. To extract-150,000 Btu/Hr		
Plant Air Requirements	None		
Input Voltage (standard)	440, {460/480} volts.		
Input Voltage Options (international)	380, 400, 575 volts (Specify in advance).		
Safety Features	Extruded aluminum and expanded metal trim.		
Options/Accessories	Infrared temperature control. Energy monitor. Manual Lift table. Shuttle table.		
*Specifications are subject to change without notice.			



FluxManager® Induction Coil #1862



Uniform temperature of heated steel pipe end. 7-5/8" (194mm) dia. 3/4" (19mm) wall. Heat length 15" (381mm) - 93sec.



Graph above shows advanced temperature control for AISI 8630 Modified. 20°F range observed from tip of pipe to 15" from pipe end. **Sample Only:** Each application is validated separately due to different thickness, length and temperature requirements.

API is a trademark owned by the American Petroleum Institute.



ISO 9001:2008 Certified

Inductoheat Inc.,
32251 N. Avis Dr., Madison Heights, MI 48071
Tel: (248) 585-9393 • Fax: (248) 589-1062
Email: sales@inductoheat.com • www.inductoheat.com

©2010 Inductoheat, Inc. All Rights Reserved. 250 04/10 BULLETIN HT-108 Rev.2