

# IROSS™ Pipe-End Heating Units

Flexible, 50/60 Hz heating solutions for tube & pipe

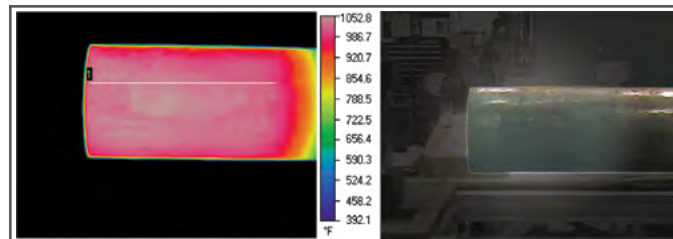


IROSS™ Pipe-End Heating Units are designed specifically for heating a variety of tubular products. These systems utilize patented fluxmanager technology that yields superior temperature uniformity compared to conventional medium frequency designs.

- Preheat for welding & swaging • Hardening • Annealing
- Normalizing • Removal and cure of coatings
- Friction weld and swage stress relieving

## Fluxmanager Features/Benefits:

- Deep and uniform temperature distribution, ID/OD, laterally, and longitudinally along extended lengths of pipe ends
- Achieves uniformity requirement  $\Delta T = \pm 77^{\circ}\text{F}$  ( $25^{\circ}\text{C}$ ), even when tubes are positioned non-concentric
- Meets or exceeds API® tube & pipe specifications
- **Flexible:** 4 coil diameters cover all OCTG pipe sizes
- **Modular:** Robust and unitized system
- Infrared and thermal image monitoring options
- Data logging capability for traceability
- Shaped flux concentrator for increased efficiency
- Deionized water NOT required
- **Versatile:** 50 or 60Hz / 350 - 600VAC input



Thermal image (left), shows advanced temperature control for AISI 8630 Modified.

- 7<sup>5</sup>/<sub>8</sub>" (194 mm) dia. - 3/4" (19 mm) wall
- Heat length 12" (304 mm)
- 93 sec. 20°F (6°C) range observed.

### Sample only:

Each application is validated separately due to different thickness, length and temperature requirements.

For more information, call 1.800.624.6297, email: [sales@inductoheat.com](mailto:sales@inductoheat.com) or visit [www.inductoheat.com](http://www.inductoheat.com)

# IROSS™ Pipe-End Heating Units

Flexible, 50/60 Hz heating solutions for tube & pipe



## IROSS™ Pipe-End Heating Units: Specifications

<b>Standard Power Rating</b> (Other sizes available upon request)	165 kVA, 50/60 Hz, Single Phase	
<b>Cooling System</b>	Standard water-to-water recirculation system	
<b>Standard Coil Assembly For Pipe O.D. Sizes:</b> (Other sizes available upon request)	# 762	2.375" - 7.625" (61 - 193 mm)
	# 1062	7.625" - 10.625" (193 - 269 mm)
	# 1462	10.625" - 14.625" (269 - 371 mm)
	# 2062	14.625" - 20.625" (371 - 473 mm)
<b>Shipping Weight</b>	Transformer/Controls: 1200 lbs. (545 kg) Coil Table: 1400 lbs. (635 kg)	
<b>Transformer/Control Dimensions</b> (W x D x H)	82" (2082 mm) x 52" (1320 mm) x 72" (1830 mm)	
<b>Coil w/ Hydraulic Lift Table Dimensions</b> (W x D x H)	36" (915 mm) x 60" (1525 mm) x 48" (1220 mm) (Maximum raised height to centerline of coil: 68" (1730 mm))	
<b>Plant Water Requirements</b>	10 gpm @ 50 psi @ 110°F max. (45 lpm @ 3 bar @ 43°C max.) To extract-150,000 Btu/hr	
<b>Plant Air Requirements</b>	None	
<b>Input Voltage</b> (standard)	440, {460/480} volts.	
<b>Input Voltage Options</b> (international)	380, 400, 575 volts (Specify in advance)	
<b>Safety Features</b>	Extruded aluminum and expanded metal trim	
<b>Options/Accessories</b>	Infrared temperature control. Thermal imaging camera. Energy monitor. Recipe management. Pneumatic coil shuttle.	

\*Specifications are subject to change without notice.

API is a trademark owned by the American Petroleum Institute.



ISO 9001:2008

Inductoheat Inc.  
32251 N. Avis Drive, Madison Heights, MI 48071  
Tel: (248) 585-9393 • Fax: (248) 589-1062 • Toll Free: (888) 241-8386  
Email : sales@inductoheat.com • www.inductoheat.com

©2011 Inductoheat Inc. All rights reserved. 05/11 LITHO IN U.S.A. BULLETIN: HT-108 Rev. 3



Leading Manufacturers of Melting, Thermal Processing and Production Systems for the Metals and Materials Industry Worldwide.